

ALUMINIUM FRAMES, FAÇADES AND SKYLIGHTS

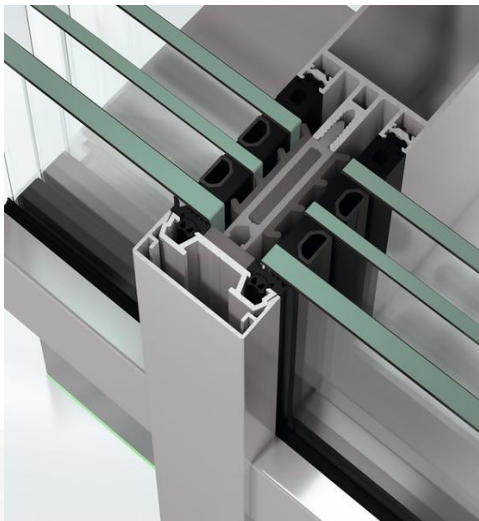


FAÇADES AND SKYLIGHT SYSTEMS

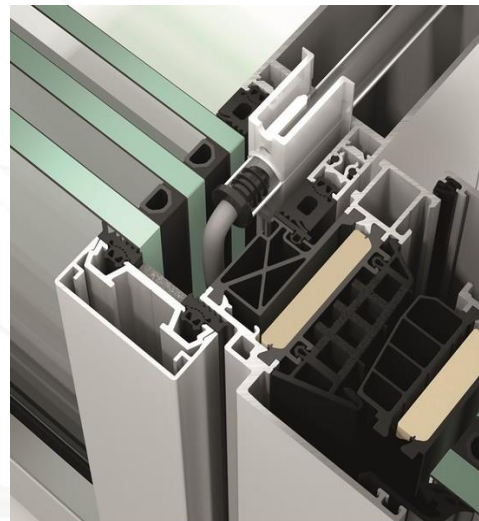
FAÇADE SYSTEM SCHÜCO FWS 50 / FWS 60

The Schüco Façade FWS 50 / FWS 60 sets new standards of fabrication and energy efficiency. The focus of the development of the tried-and-tested systems was particularly the optimization of fabrication in the workshop and in the construction site. New prepared system components ensure, for example in the workshop, a much faster fabrication process, and therefore, more efficient.

The Schüco FWS 50 / FWS 60 façade systems provide architects with a diverse range of design options – including the Passivhus - certified SI version – in the popular face widths.



Schüco façade FWS 50 / FWS 60



Intelligent cable implementation inside
the frame



Schüco FWS 50 S
Thinner and more elegant profile

New system components, simplify the fabrication process: for example, the innovative building attachment system that ensures reliable fabrication through the elimination of interfaces.

Very heavy panes will be even easier to manufacture in the future thanks to the new range of glazing supports, and will retain the same high level of load transfer.

A new cable guidance system now guarantees the metal fabricator the safe integration of electrical components in the mullion/transom façade.

FAÇADE SYSTEM SCHÜCO FWS 50 / FWS 60

Product benefits

Energy

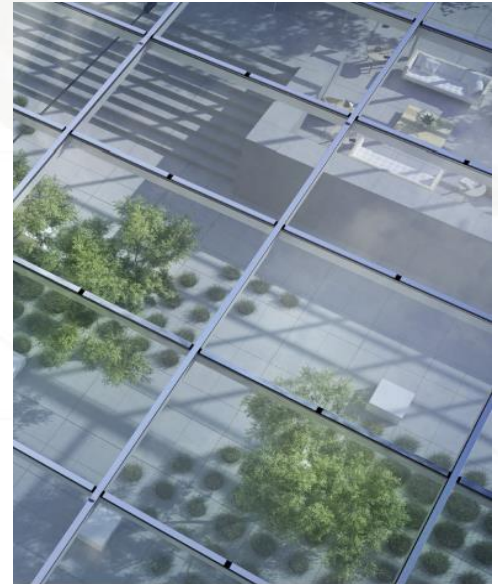
- Passivhus certified SI system with new insulating technology: U_f values up to $0.70 \text{ W}/(\text{m}^2\text{K})$.
- New HI insulating system to Passivhus standard: U_f values of up to $0.90 \text{ W}/\text{m}^2/\text{K}$.
- Complete solutions for the integration of Schüco BIPV systems.

Design

- Integration of diverse insert units: Schüco AWS, ADS, ASS.
- Schüco AWS 114 SG.SI façade window as an outward and parallel-opening or projected top-hung window.
- Combination of the new Schüco FWS 60 sliding window allows the use of thin profiles for turn/tilt windows.

Automation

- New cable guidance system for simple, safe installation and commissioning of mechatronic components of up to 230 V AC.
- Rear cable channel on mullion enables the flexible installation of cable guides.
- Integration of Schüco AWS 114 as projected top-hung window or parallel-opening window: possibility of large automated window solutions incorporated in the building management system for standard and SHEVS applications.
- Profiles that allow for integration of the Schüco AWS window series with Schüco TipTronic fitting.



FAÇADE SYSTEM SCHÜCO FWS 50 / FWS 60

Security

- Burglar resistance tested up to RC 3.

Enhanced function

- New glazing supports for maximum weight and simple installation.

Fabrication benefits

- New SI insulator with hard core: for the safe guiding of screws, damage-free transport and efficient fabrication.
- Uniform gasket system for the entire system platform based on the gasket heights of 9 mm, 11 mm and 13 mm as well as 5mm to the outside.
- In the future, all main pressure covers will have the same contour including the insulation material required (standard, HI and SI): prepared solution for efficient fabrication with minimal preparation work, doubling of the Ix value with almost the same profile weight optimizing structural properties.



SCHÜCO ROOF VENT AWS 57 RO.HI

The highest levels of energy efficiency and a wide variety of design options – also for large-scale roof glazing

The Schüco Roof Vent AWS 57 RO can be used in an almost unlimited way due to the two different thermal insulation standards, the different heights of the outer frame and the design options.

It offers system reliability in sophisticated skylight constructions when combined with the Schüco FW 50+, FW 60+ systems, the AOC 50 / AOC 60 add-on constructions

The highest levels of energy efficiency and a wide variety of design options



Schüco Roof Vent AWS 57 RO

SCHÜCO ROOF VENT AWS 57 RO.HI

SCHÜCO ROOF VENT AWS 57 RO.HI

Product benefits

- High level of flexibility thanks to two different outer frame depths and two different thermal insulation standards.
- Different design options with concealed or visible screw fixing. Trapezium shapes are also available.
- Can be manually or electrically operated with a linear chain or actuator.
- Standard applications and NSHEVS systems can be integrated completely in the building management system.
- Can be used for Natural Smoke and Heat Exhaust Ventilation Systems (NSHEVS) in accordance with EN 12101-2.
- With special chain actuator, burglar resistance tested to RC 2.
- The glass and insulation allows a flat close, ensuring water drainage and a self-cleaning effect.
- Different glazing options depending on the design.
- Opening angle up to 90° possible, width and height up to 2100 mm, maximum surface area = 2.73 m² (larger sizes on request), maximum weight = 120 kg, roof pitch from 7° to 75° (roof pitches < 7° or > 75° on request).

Fabrication benefits

- Outer frame system easy to install in mullion/transom constructions.
- Drive technology: efficient, concealed installation behind special cover profile.
- Sliding blocks for the simple fixing of concealed hinges in the rebate area.