

ALUMINIUM FRAMES, FAÇADES AND SKYLIGHTS



ALUMINIUM FIRE-PROTECTION DOOR SYSTEM

ALUMINIUM FIRE-PROTECTION DOOR SYSTEM

SCHÜCO FIRESTOP T90 / F90

Fires may arise as a result of earthquakes, lightning bolts, defective equipment and installations, criminal origin or even human negligence.

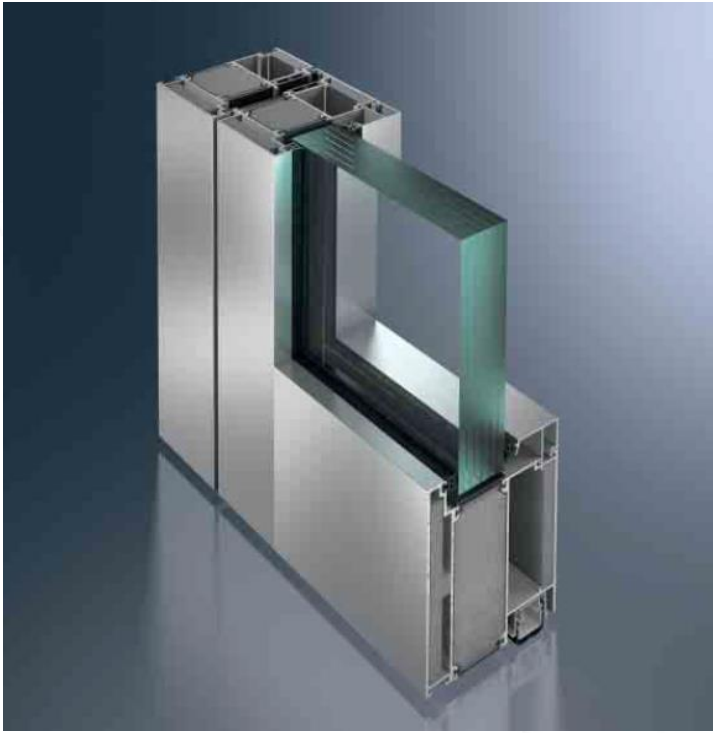
In case of a fire, buildings should be prepared with fire protection or fire retardant systems in the common areas, allowing for the people inside to exit safely.



Fire retardant doors and Windows that can resist up to 90 minutes (doors) or 30 minutes (Windows) must be implemented in public buildings.

Fire-proof doors with anti-panic function and external handle (optional) are made to be used on a daily basis and, according to DIN EN 1125, are indicated for public buildings, requiring no special knowledge or instructions to be used by the general public in case of emergencies.

ALUMINIUM FIRE-PROTECTION DOOR SYSTEM SCHÜCO FIRESTOP T90 / F90



Schüco FIRESTOP T90 / F90

This series is based on stable hollow profiles with a basic depth of 105mm (4,13 in) with which clear opening dimensions of up to 1312 x 2493 mm, or 51,65 x 98,15 inches, can be constructed.

Optional fitting components can be added to create tailor-made, multi-purpose doors to meet the most varied of requirements for building safety, security and automation.

This series has impressive fire and smoke protection properties, as well as other potential applications such as panic functions, access control or sound reduction.

The fully approved aluminium door and wall units prevent the uncontrolled spread of fire for a period of 90 minutes.

ALUMINIUM FIRE-PROTECTION DOOR SYSTEM

SCHÜCO FIRESTOP T90 / F90



SCHÜCO FIRESTOP T90 / F90

Product benefits

- Clear opening dimensions
 - 1312 x 2493 mm (51,65 x 98,15 in) single-leaf
 - 2648 x 1493 mm (104,25 x 58,78 in) double-leaf
- Unit height up to 4500 mm (177,17 in)
- Maximum glass sizes
 - 1400 x 2300 mm (55,12 x 90,55 in)
 - 1500 x 2500 mm (59,06 x 98,43 in) possible with project-specific approval
- Single and double-leaf with sidelight / top light, inward / outward opening
- Maximum vent weights of up to 300 Kg (661 lbs)
- Side-hung door can also be used on double-leaf doors.
- Approved for use in doors in internal walls, glazing for internal and external walls

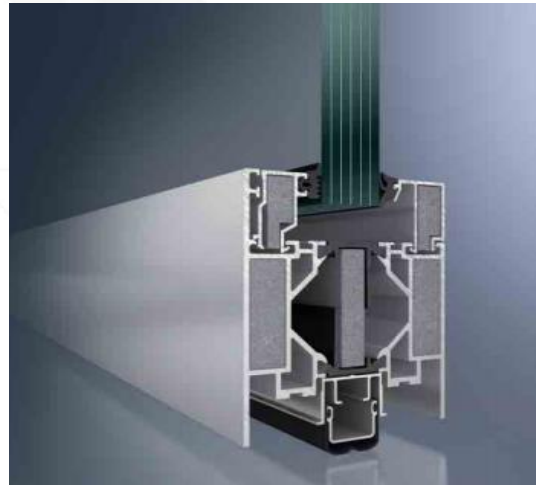
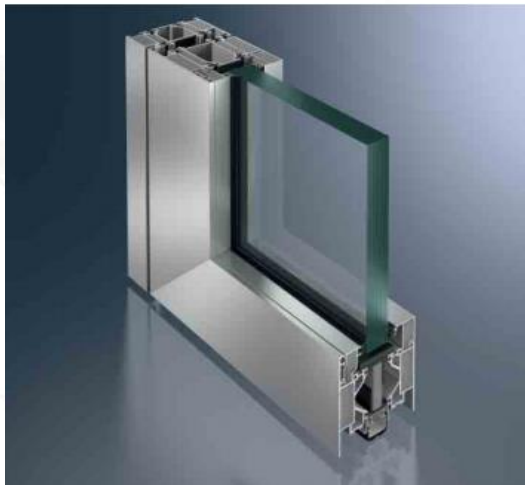
Fabrication benefits

- Locking cams pre-assembled at the factory allow uniform and flexible installation of all fittings components in the multi-purpose groove.
- The units can be fixed to the building structure quickly and economically using a variety of installation accessories.



ALUMINIUM FIRE-PROTECTION DOOR SYSTEM

SCHÜCO ADS 80 FR 60



This range has impressive fire and smoke protection properties, as well as other potential applications such as burglar resistance to RC2 (WK2) with optional panic function or sound reduction (to 42dB). The use of concealed top door closers or pre-selectors is also possible.

SCHÜCO ADS 80 FR 60	
Product benefits	Fabrication benefits
<ul style="list-style-type: none"> • Clear opening dimensions: <ul style="list-style-type: none"> ➤ Single-leaf 1400 x 2488 mm (55,12 x 97,95 in) ➤ Double-leaf 2820 x 2488 mm (111,02 x 97,95 in) • Generous dimensions: <ul style="list-style-type: none"> ➤ Up to 4000 mm high (157,48 in) ➤ Unlimited length • Glass sizes up to 1400 x 2500 mm (55,12 x 98,43 in). • Multi-purpose: fire and smoke protection, burglar resistance, sound reduction, access control and panic functions. • System profiles and system fittings predominantly identical to those for Schüco Door ADS 80 FR 30. • All the necessary system fittings including fire-resistant glass are supplied. • T60 approval granted in Germany, country-specific approvals are available. 	<ul style="list-style-type: none"> • Locking cams pre-assembled at the factory. • Fast and cost-effective fixing of the units to the building structure with various accessories.